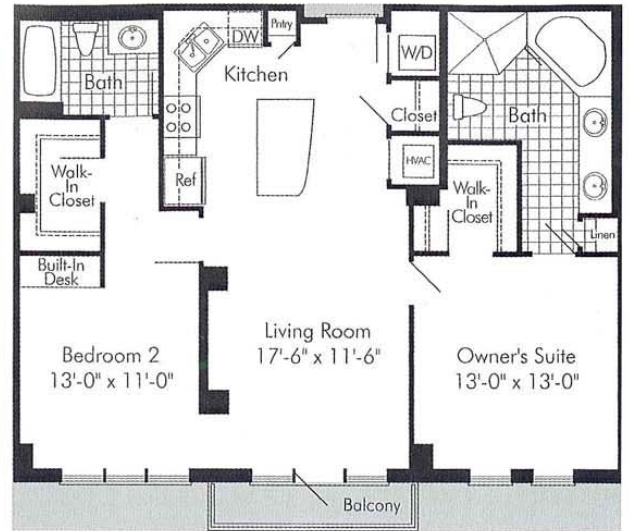




SPECTRUM, FALLS CHURCH



The Contemporary Goldenrod two-bedroom, two-bathroom floor plan with balcony is one of Spectrum's Lifestyle By Design™ layouts.

Choosing a Lifestyle

A new approach to condominium living is right around another corner in Falls Church. Spectrum, an upscale mixed-used community developed by Waterford Development, offers buyers the option to choose a floor plan that suits their tastes.

It could be a Cool floor plan, like the Emerald, which is a one-bedroom loft plus den with one and one-half baths. Sleek stainless steel, cork flooring, and ceramic tiles distinguish the Cool line in Spectrum's Lifestyle By Design™ floor plans, while the two-bedroom, two-bathroom Jade in the Classic line features timeless elements, such as kitchens with pantries and islands plus large dining areas. The Contemporary line includes the Goldenrod floor plan with two bedrooms, two baths, a balcony, and combined elements of the other plans. An entertainment wall in the living room, bold architectural features, and bamboo flooring distinguish the Contemporary designs.

Buyers are attracted to "the expression of space offered by the three lifestyle floor plans," says Niki Piersall, director of sales and marketing for Waterford Development. "We want to appeal to the desires of the purchasers" and that includes offering floor plans to fit how people live. The designs have been very well received, Piersall adds, with those who might be looking for a traditional space selecting the Classic floor plan, while someone opting for open spaces may choose the Cool design. The name "Spectrum" is significant, Piersall says, because not only does the community appeal to a broad range of buyers, but it also offers a full spectrum of floor plans. The community brings vibrancy to Falls Church and neighboring retail shops, she adds.

Built by Bovis Lend Lease and designed by Cooper Carry, Spectrum will include 189 units, 30,000 square feet of retail space, and 29,000 square feet of office space. Construction began in July with an anticipated completion in summer 2007. The units are currently for sale by McWilliams Ballard. **ws**

RESOURCES

- **Bovis Lend Lease**
301.951.3160
bovis.com
- **Cooper Carry**
703.519.6152
coopercarry.com
- **H&S Properties Development Corp.**
410.649.0030
- **Lionsgate at Woodmont Corner**
Duball LLC
703.234.5631
duball-LLC.com
- **Marks, Thomas Architects**
410.539.4300
marks-thomas.com
- **McWilliams Ballard**
703.535.5550
mcwilliamsballard.com
- **North Point Villas**
703.437.4537
bozzuto.com/northpointvillas
- **R.D. Jones & Associates Inc.**
410.332.4700
rdjones.com
- **Rita St. Clair Associates**
410.752.1313
ritastclair.com
- **SK&I Architectural Design Group LLC**
301.654.9300
skiarch.com
- **Spectrum**
703.533.8525
spectrumcondo.com
- **Spinnaker Bay**
410.727.2799
spinnakerbayapts.com
- **The Bozzuto Group**
301.220.0100
bozzuto.com
- **The Mayhood Company**
301.986.0066
mayhoodcompany.com
- **The Ritz-Carlton Residences, Inner Harbor, Baltimore/ Midtown Baltimore LLC**
410.727.4417
harborluxury.com
- **Torti Gallas and Partners**
301.588.4800
tortigallas.com
- **Waterford Development**
703.674.1699
waterforddevelopmentllc.com